



METAL
Mudroka
WORLDWIDE DOMINATION

Fall 2015

COLLECTION





METAL Mulisha

WORLDWIDE  DOMINATION

Fall 2015

COLLECTION

Contents

HELL ON HEELS	02
MULISHA NOUVEAU	04
TO THE EDGE	06
TRUE MAIDEN	08
KNITS	10
FLEECE	12
SWEATERS	16
DRESSES // JUMPSUITS //	19
ROMPERS	
JACKETS	23
WOVENS	26
TANKS	29
BOTTOMS	32
DANI G	37
PRINTABLE FLEECE	39
PRINTABLE L/S	42
PRINTABLE TEES	45
PRINTABLE TANKS	50
LIL MAIDENS	53
ACCESSORIES	62
FLOORSETS	76



Hell on Heels

The Hell on Heels girl is a free spirit who can never be tied down. She lives to spend her time on her bike and the open road. A combination of 70's style biker with a taste of rock n' roll complete the look.



NIGHTMARE FLANNEL // M35704301
AMBIVALENT SCOOP // M357S18315
WICKED STITCH PANT // M35709311



CHEYENNE SWEATER // M35717304
X-RAY TANK // M357S23303
WICKED STITCH PANT // M35709311
LOST AND FREE PURSE // M35795300



ODESSA DRESS // M35716300
VELVET TOUCH CROSSBODY // M35795301



NIGHTMARE SWEATER // M35717300
SAVANNAH TANK // M35711301
ODESSA PANT // M35709302



Mulisha Nouveau

The Mulisha Nouveau girl embodies the heart, essence and the soul of Mulisha. She never loses her edge, or the connections to her roots, even while evolving through life. She will always give you a run for your money.



MADISON JACKET // M35702302
CONCEALED TANK // M35711303
WICKED STITCH PANT // M35709311



EVER WANTED DRESS // M35716308



JUPITER FLANNEL // M35704300
RHAPSODY TEE // M357S18310
WICKED STITCH PANT // M35709311



TANGLED UP TANK // M357S23309
WASHED OUT SKIRT // M35715301



To the Edge

The To the Edge girl lives a life filled with self-expression, rebellion, and music. Careless and living for the fun of the moment, she has the true Mulisha spirit. Her style consists of metal studs, music inspired art, and skulls.



DISCLOSURE SWEATER // M35717305
ROCK IT TANK // M357523301
PLAIDNESS SKIRT // M35715303



LEGACY FLEECE JACKET // M35702304
SLIP AWAY DRESS // M35716305



RADIO JACKET // M35702301
DEATH TRIP TOP // M35703304
MAGNETIC PANT // M35709304



LEGACY FLEECE JACKET // M35702304
WEIGHTLESS DRESS // M35716303



True Maiden

The True Maiden girl is the iconic bombshell that started it all. Her style consists of body hugging silhouettes, which help to accentuate her hourglass curves. She is the original Mulisha girl.



SUGAR COATED FLANNEL // M35704303
QUEEN OF DIAMONDS SCOOP // M357S18304
WICKED STITCH PANT // M35709311



NATASHA SWEATER // M35717301
WICKED STITCH PANT // M35709311
GYPSY ROAD HOBO // M35795303



CHEYENNE JACKET // M35702303
MEDALLION DRESS // M35716302
MEMORIES SOCK // M35787303



CHELSEA FLEECE // M35710307
WICKED STITCH PANT // M35709311



Knits



BITTER RIVAL TOP

M35703302

COLORS: BLK
SIZES: XS,S,M,L,XL
DEL: 6/15, 7/15, 8/15

95% viscose/ 5% spandex jersey, 190 grams, 26" hps, long sleeve top with cotton/nylon lace at exposed sleeve panels, and front and back shoulders, and logo tack at front bottom left hem



MADISON TOP

M35703300

COLORS: BLK,PIN
SIZES: XS,S,M,L,XL
DEL: 6/15, 7/15, 8/15

50% polyester/ 40% cotton/ 10% rayon yarn dyed heather jersey, 190 grams, 25" hps, long sleeve wide neck top, with open cotton/nylon crochet lace at top yoke of body, rib neckline, and metal logo trim plate at front left hem.



DEATH TRIP TOP

M35703304

COLORS: NAT,BLK
SIZES: XS,S,M,L,XL
DEL: 6/15, 7/15, 8/15

65% polyester/ 35% rayon jersey, 150 grams, 29.5" hps, knit top with 100% poly chiffon at CB panel, 1 color screen print at front, and logo tack at front bottom left hem



ALABAMA TOP

M35703303

COLORS: CHA,RED
SIZES: XS,S,M,L,XL
DEL: 6/15, 7/15, 8/15

52% cotton/ 48% polyester thermal, 165 grams, 27" hps, raglan long sleeve top with snap front neckline, raw edge seams, sleeve end screens, with front left chest logo screen.





Fleece



OVERCOME FLEECE

M35710301

COLORS: WNE,GRY

SIZES: XS,S,M,L,XL

DEL: 6/15, 7/15, 8/15

60% cotton/ 40% polyester, 240 grams, 26.5" hps, pullover fleece with 100% polyester chiffon caging detail at back, and 2 color logo embroidery at front bottom left hem. (BLK) dip-dye.



FLOWERS FLEECE

M35710302

COLORS: ROS,GRY

SIZES: XS,S,M,L,XL

DEL: 6/15, 7/15, 8/15

80% cotton/ 20% polyester, 230 grams, 28" hps, pullover heather french terry fleece with hood, cotton/nylon crochet lace side body panels on front and back, and logo tack at front bottom left hem.



CUT HERE FLEECE

M35710304

COLORS: CHA

SIZES: XS,S,M,L,XL

DEL: 6/15, 7/15, 8/15

65% polyester/ 35% cotton, 220 grams, 28.5" hps, pullover speckled french terry fleece, all raw edge seams, skull embroidery at center front, and logo tack at front bottom left hem.





TAKE A WALK FLEECE

M35710309

COLORS: RED,BLK

SIZES: XS,S,M,L,XL

DEL: 6/15, 7/15, 8/15

70% cotton/ 30% polyester, 220 grams, 27" hps, slub french terry pullover v-neck fleece with hood, contrast saddle stitching at front pockets, front neckline, and side seams, skull embroidery on front pocket.



LIZABETH FLEECE

M35710305

COLORS: CHH,BLK

SIZES: XS,S,M,L,XL

DEL: 6/15, 7/15, 8/15

60% cotton/ 40% polyester, 260 grams, 27" hps, diamond quilted fleece, sherpa hood and body lining, hidden zipper closure, welt chest pocket, and zipper bottom body welt pockets with left chest logo emb. (CHH) yarn dyed quilted heather



CHELSEA FLEECE

M35710307

COLORS: BLK

SIZES: XS,S,M,L,XL

DEL: 6/15, 7/15, 8/15

60% cotton/ 40% polyester, 240 grams, 25" hps, speckled raglan sleeve fleece with contrast body, contrast drawcord with logo eyelets, contrast hood lining, allover print on sleeves and hood, with metal logo trim plate at front right pocket.





JORDAN PULLOVER

M35710308

COLORS: BLK,BPK

SIZES: XS,S,M,L,XL

DEL: 6/15, 7/15, 8/15

60% cotton/ 40% polyester french terry, 240 grams, 25" hps, yarn dye heather contrast pullover fleece, with engineered logo hood screen and front left chest logo embroidery.



DAKOTA FLEECE

M35710306

COLORS: BLK

SIZES: XS,S,M,L,XL

DEL: 6/15, 7/15, 8/15

60% cotton/ 40% polyester, 260 grams, 25" hps, yarn dyed heather zip up fleece with solid raglan sleeves and hood, 100% polyester fur lined hood and body, 100% polyester fur hood edge trim, and logo front chest applique with screen.



ALL THE LOVE FLEECE

M35710303

COLORS: BLK

SIZES: XS,S,M,L,XL

DEL: 6/15, 7/15, 8/15

60% cotton/ 40% polyester, 260 grams, 26" hps, zip-up fleece with printed jersey contrast lining in hood, window applique with all over print at front, contrast printed drawcords, contrast stitching on front pockets, and custom label at bottom corner of front left pocket





Sweaters



INTRO SWEATER

M35717306

COLORS: CRM,GRY

SIZES: XS,S,M,L,XL

DEL: 6/15, 7/15, 8/15

55% cotton/ 45% acrylic, 10 gauge, 22" hps, cable knit sweater with custom knit skull pattern on center front chest, and logo tack at front bottom left hem.



NATASHA SWEATER

M35717301

COLORS: BPK,NAT

SIZES: XS,S,M,L,XL

DEL: 6/15, 7/15, 8/15

100% cotton boucle, 5gg, 23" hps, v-neck full fashion sweater with 1x1 rib at neckline, sleeve ends and bottom split hem with scalloped lace trim, metal logo plate at bottom left hem.



YOU & I SWEATER

M35717308

COLORS: BLK

SIZES: XS,S,M,L,XL

DEL: 6/15, 7/15, 8/15

cotton acrylic blend, tunic v-neck stripe slub knit sweater with faux leather skull applique on front, sheer open sweater knit back panel, and logo tack on front bottom left hem





DISCLOSURE SWEATER

M35717307

COLORS: BLR,CHA

SIZES: XS,S,M,L,XL

DEL: 6/15, 7/15, 8/15

70% polyester/ 30% acrylic, 280 grams, 24" hps, open front knit heathered cardigan with a longer front cut, skull embroidery on left chest.



NIGHTMARE SWEATER

M35717300

COLORS: BLK

SIZES: XS,S,M,L,XL

DEL: 6/15, 7/15, 8/15

100% cotton 2/30's, 12gg, 22" hps, full fashion sweater with hood, 2x2 rib at sleeve ends, 3 color engineered jacquard front and back design with metal logo badge at front left chest.



CHEYENNE SWEATER

M35717304

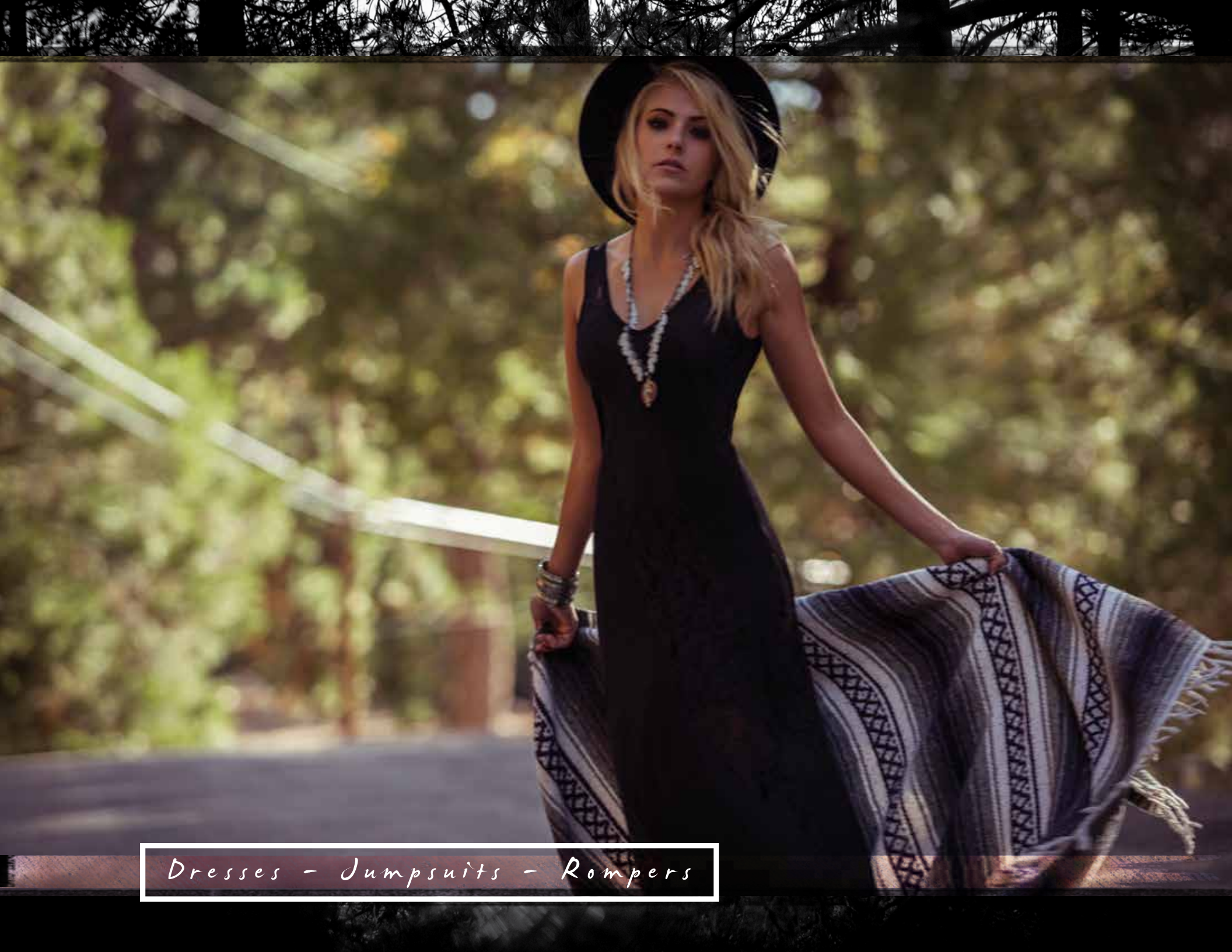
COLORS: WHT,BLK

SIZES: XS,S,M,L,XL

DEL: 6/15, 7/15, 8/15

100% cotton, 8gg, 28" hps, jacquard draped full fashion sweater, with 2x2 rib, custom stripe design with metal logo badge at front left chest.





Dresses - Jumpsuits - Rompers



SLIP AWAY DRESS

M35716305

COLORS: BUR

SIZES: XS,S,M,L,XL

DEL: 6/15, 7/15, 8/15

100% polyester georgette, 52" hps, woven sheer fly away maxi dress with all over floral print, full front button closure, dress is half lined with 100% polyester pich chiffon, adjustable straps, and logo tack at back bodice panel on right side.



ODESSA DRESS

M35716300

COLORS: CRM

SIZES: XS,S,M,L,XL

DEL: 6/15, 7/15, 8/15

95% rayon/ 5% spandex jersey, 190 grams, 52" hps, maxi dress with slit and neckline keyhole, adjustable straps, shelf bra, engineered allover print with metal logo badge at center back top body.



NIGHT SKY DRESS

M35716306

COLORS: BLK

SIZES: XS,S,M,L,XL

DEL: 6/15, 7/15, 8/15

100% rayon jersey, 180 grams, 58" hps, knit maxi dress with 100% nylon lace exposed panels, half lined with 100% polyester tricot, and logo tack at center back below neck opening.



MADISON MAXI

M35716301

COLORS: WHT

SIZES: XS,S,M,L,XL

DEL: 6/15, 7/15, 8/15

47% cotton/ 46% rayon/ 7% spandex, 190 grams, 54" hps, maxi dress, adjustable spaghetti straps, solid bodice, printed skirt and metal logo plate at back.





WEDNESDAY DRESS

M35716307

COLORS: BLK
SIZES: XS,S,M,L,XL
DEL: 6/15, 7/15, 8/15

100% rayon crinkle gauze, light-weight, 32" hps, fit and flare bell sleeved dress, stretch lace empire panel, pintuck neckline tie detail with keyhole, metal logo badge at back neckline.



BREATHE ME DRESS

M35716304

COLORS: WNE,BLK
SIZES: XS,S,M,L,XL
DEL: 6/15, 7/15, 8/15

100% crinkle rayon, 200 grams, 33" hps, woven tank dress with 100% polyester chiffon caging back panel with frayed edges, 4 color all over print, flutter ruffled hemline, and logo tack at front bottom left corner of skirt above hem.



WEIGHTLESS DRESS

M35716303

COLORS: RED,BLK
SIZES: XS,S,M,L,XL
DEL: 6/15, 7/15, 8/15

97% polyester/ 3% spandex jersey, 220 grams, 33" hps, henley swing dress with all over jacquard floral pattern, button closure at center front neckline, and logo tack at front bottom left corner of skirt hem.



EVER WANTED DRESS

M35716308

COLORS: GRY
SIZES: XS,S,M,L,XL
DEL: 6/15, 7/15, 8/15

95% viscose/ 5% elastane jersey, 190 grams, 32" hps, a-line dress with cotton/nylon stretch lace at exposed front chest and back panel, 1 color engineered screen print on front and back body, button closure down center back lace panel, slight high low hem with lace panel pieces sewn around hemline, and logo tack at front bottom left corner above lace piece.





MEDALLION DRESS

M35716302

COLORS: BLK

SIZES: XS,S,M,L,XL

DEL: 6/15, 7/15, 8/15

95% cotton/ 5% elastane jersey, 180 grams, 27" hps, constructed tube dress, allover printed bodice with solid skirt and back top skirt logo embroidery.



ALABAMA JUMPSUIT

M35709300

COLORS: BUR,BLK

SIZES: XS,S,M,L,XL

DEL: 6/15, 7/15, 8/15

100% rayon woven, medium weight, 54" hps, high waist wide flare leg jumpsuit, with exposed front 100% nylon lace at bodice, adjustable tie back at dropped back, and metal logo plate at front left hip. (BUR) has allover print.



FIND ME ROMPER

M35709310

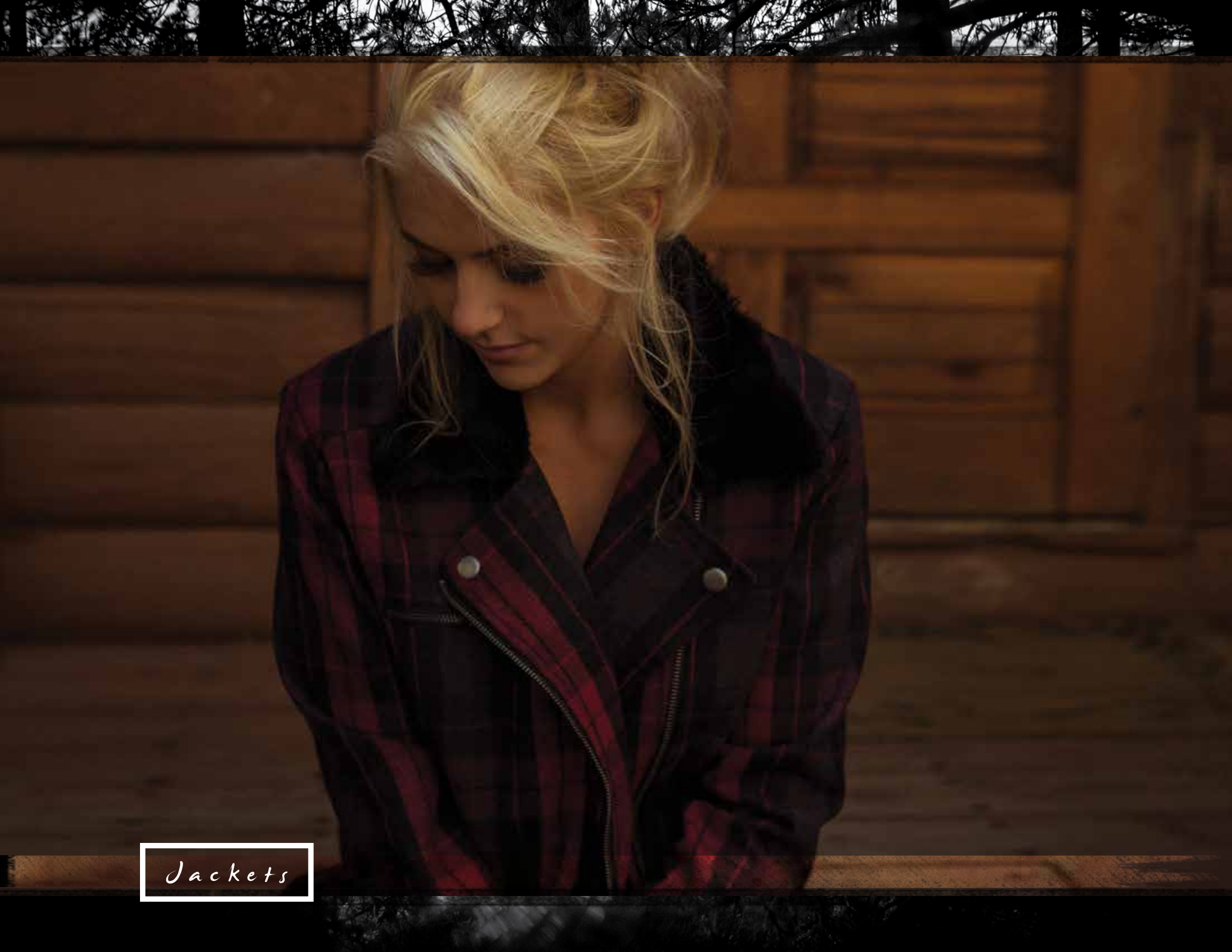
COLORS: Nvy

SIZES: XS,S,M,L,XL

DEL: 6/15, 7/15, 8/15

100% rayon woven, lightweight, 27" hps with 2" inseam, drawcord waistband romper with crossover front with hidden snap, button up rolled sleeve detail, allover contrast print and metal logo badge at center back neckline.





Jackets



LEGACY JACKET

M35702304

COLORS: BLU,GRY
SIZES: XS,S,M,L,XL
DEL: 6/15, 7/15, 8/15

60% cotton/ 40% polyester, 26.5" hps, washed french terry denim looking fleece jacket with fleece hood, center front button up closure, front welt pockets, pouch pockets with button flap closure on chest, and logo tack at front left corner above waistband.



RADIO JACKET

M35702301

COLORS: BLK
SIZES: XS,S,M,L,XL
DEL: 6/15, 7/15, 8/15

60% cotton/ 40% polyester, 26" hps, biker denim jacket with sherpa collar and lining, button tabs on sleeve cuffs and sides of waistband, and logo tack at front.



MADISON JACKET

M35702302

COLORS: CHA
SIZES: XS,S,M,L,XL
DEL: 6/15, 7/15, 8/15

90% polyester/ 10% brushed wool, 330 grams, 27" hps, hidden zipper front hooded peacoat, 100% polyester satin full body lining, high logo tack button neck closure, bottom welt pockets, allover print, back rib logo embroidery and metal logo plate at right front hem.



TRIBUTE JACKET

M35702300

COLORS: BLR
SIZES: XS,S,M,L,XL
DEL: 6/15, 7/15, 8/15

50% polyester/ 50% cotton, 27" hps, woven plaid biker jacket with fur collar and exposed zipper closure, lined with black satin, front welt pockets and exposed metal zipper chest pocket, sleeve cuffs with exposed metal zipper detail, and logo tack at front bottom left corner above waistband.





CHEYENNE JACKET

M35702303

COLORS: BLK

SIZES: XS,S,M,L,XL

DEL: 6/15, 7/15, 8/15

80% cotton/ 20% polyester fleece, 240 grams, 25" hps, hooded zip-up fleece with inset paneled quilted outer sleeves, jersey lined body and hood, 100% pu leather vest body with welt pockets and stud detail, quilted shouder/back yoke panels, metal logo badge at front chest with logo emb at back right hem.





Wovens



JUPITER FLANNEL

M35704300

COLORS: PUR
SIZES: XS,S,M,L,XL
DEL: 6/15, 7/15, 8/15

100% cotton brushed flannel, lightweight, 27" hps, button up yarn dyed plaid with 80% cotton/20% polyester fleece hood, chest pockets with button closure and back left logo yoke embroidery.



NIGHTMARE FLANNEL

M35704301

COLORS: BUR
SIZES: XS,S,M,L,XL
DEL: 6/15, 7/15, 8/15

100% cotton twill weave flannel, lightweight and brushed, 26" hps, yarn dye long sleeve button up plaid, flap chest pockets with button closure, logo clip label front bottom placket, with logo embroidery at back left sleeve seam above placket.



SUGARCOATED FLANNEL

M35704303

COLORS: BLK
SIZES: XS,S,M,L,XL
DEL: 6/15, 7/15, 8/15

100% cotton, 27.5" hps, brushed lightweight plaid button up flannel with fleece hood, pouch pockets with button flap closure on front chest, front welt pockets, and logo tack at front left chest pocket.



PRETTY FACE FLANNEL

M35704302

COLORS: BLK
SIZES: XS,S,M,L,XL
DEL: 6/15, 7/15, 8/15

100% cotton, 28" hps, brushed lightweight plaid button up flannel with logo tack on front left chest pocket.





SAVANNAH TOP

M35704304

COLORS: BLK

SIZES: XS,S,M,L,XL

DEL: 6/15, 7/15, 8/15

100% rayon crinkle gauze, lightweight woven, 25" hps, cold shoulder loose fit top with adjustable straps, lace trim hem, button up front detail, crochet piecing at outseam sleeve ends, and metal logo badge at back neckline.



ALABAMA KIMONO

M35704305

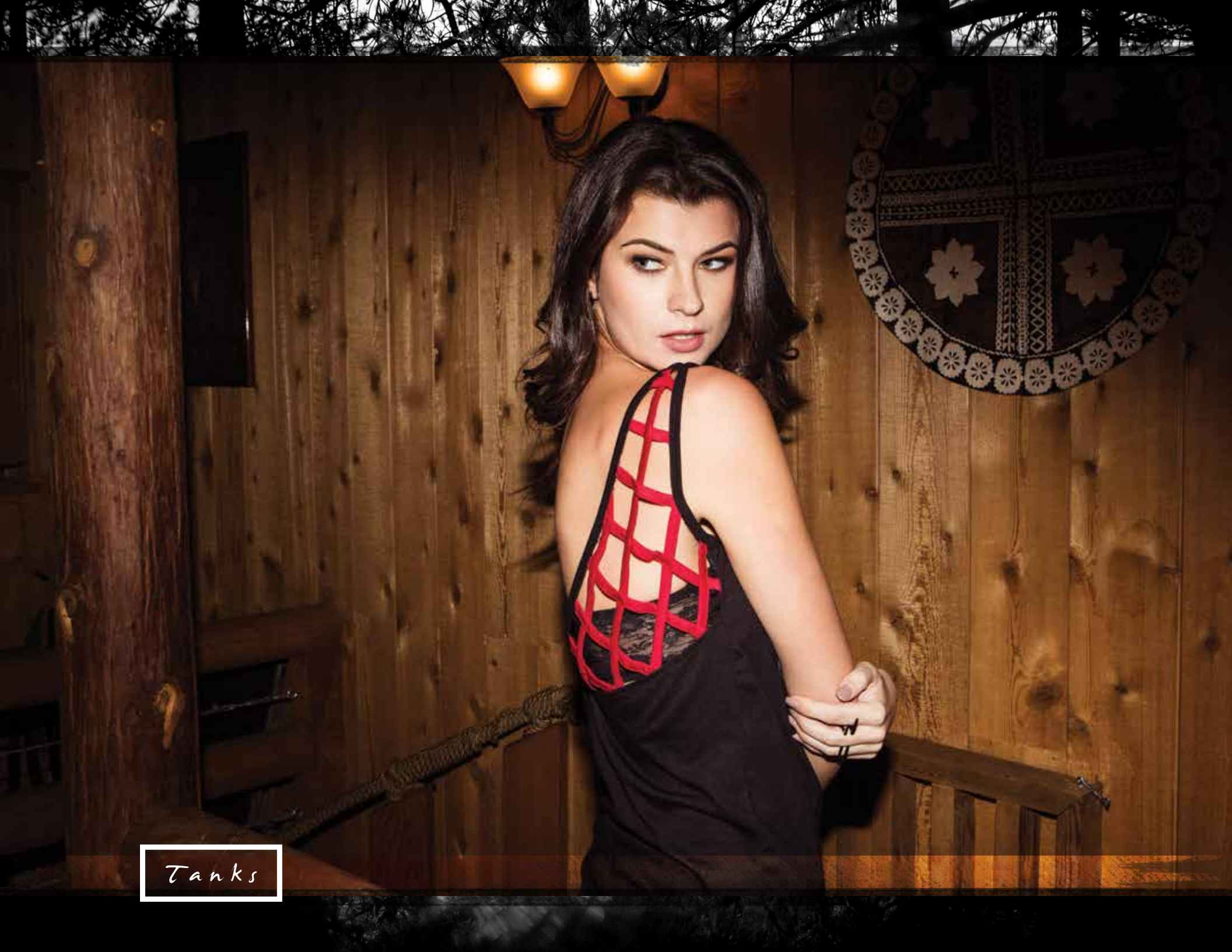
COLORS: BLK

SIZES: XS/S,M/L

DEL: 6/15, 7/15, 8/15

100% polyester chiffon, lightweight, 29" hps, long drape kimono with engineered allover print, and metal logo badge at center back neckline.





Tanks



CONCEALED TANK

M35711303

COLORS: TEL,BLK

SIZES: XS,S,M,L,XL

DEL: 6/15, 7/15, 8/15

68% rayon/ 27% polyester/ 5% spandex jersey, 25" hps, halter cut tank with custom burnout artwork on front chest and center back panel, and logo tack at front bottom left hem.



SAVANNAH TANK

M35711301

COLORS: BUR,NAT

SIZES: XS,S,M,L,XL

DEL: 6/15, 7/15, 8/15

65% poly/ 35% viscose jersey, 160 grams, 23" hps at front, high/low crossover raw edge racerback tank, with engineered embroidery at hem, and logo metal badge at cb neckline.



ALABAMA TANK

M35711305

COLORS: WHT

SIZES: XS,S,M,L,XL

DEL: 6/15, 7/15, 8/15

95% cotton/ 5% elastane jersey, 180 grams, 24" hps, high neckline racerback tank, with engineered front and back screens with logo emb at back left rib.



NATASHA TANK

M35711300

COLORS: WHT

SIZES: XS,S,M,L,XL

DEL: 6/15, 7/15, 8/15

100% rayon woven, lightweight, 22" hps, racerback tank with contrast solid binding, 100% nylon lace at back, with allover print and logo embroidery at back body edge.





SIRENSONG TANK

M35711302

COLORS: BLK

SIZES: XS,S,M,L,XL

DEL: 6/15, 7/15, 8/15

60% cotton/ 40% polyester jersey, 130 grams, 25.5" hps, knit tank with exposed metal zipper at center front chest, 1 color screen print on front, and caging detail at back panels.



WEST COAST TANK

M35711306

COLORS: BLK

SIZES: XS,S,M,L,XL

DEL: 6/15, 7/15, 8/15

95% cotton/ 5% elastane jersey, 180 grams, 26.5" hps, knit tank with contrast light weight french terry side panels with all over floral print, open keyhole at center back, 1 color logo embroidery on back right side panel, and logo tack at front bottom left hem.



JORDAN TANK

M35711304

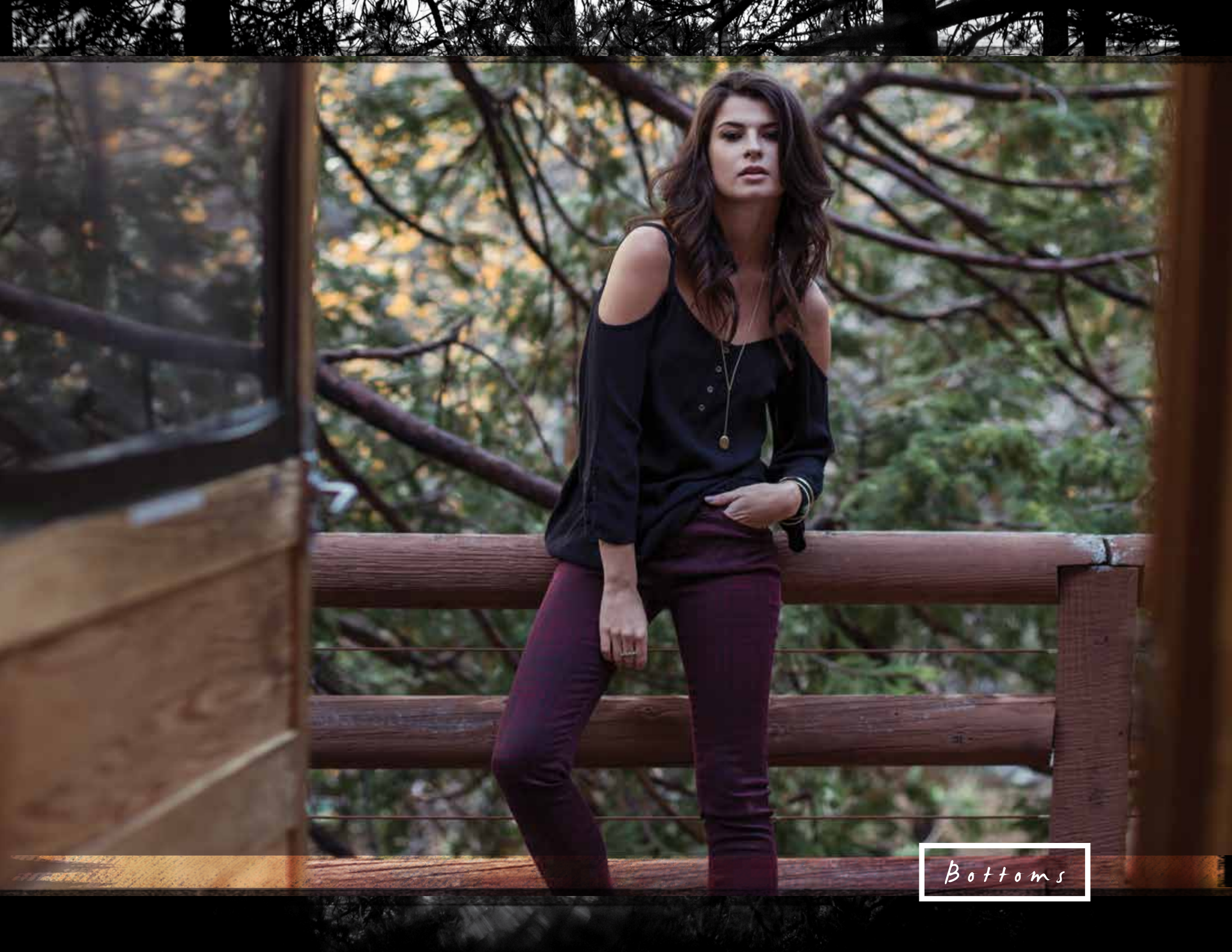
COLORS: HGR,BLK

SIZES: XS,S,M,L,XL

DEL: 6/15, 7/15, 8/15

60% cotton/ 40% polyester jersey, 145 grams, 26" hps, racerback contrast binding tank with snap front neckline placket, engineered logo screen at left side. (HGR) yarn dyed heather stripe jersey.





Bottoms



ODESSA PANT

M35709302

COLORS: BLK,CRM

SIZES: XS,S,M,L,XL

DEL: 6/15, 7/15, 8/15

62% polyester/ 33% viscose/ 5% elastane jersey, 180 grams, 33" inseam wide flare leg pant with elastic waistband. (CRM) multi colored engineered print. (BLK) solid with lace outseam detail.



MAGNETIC PANT

M35709304

COLORS: MRN,BLW

SIZES: 0,1,3,5,7,9,11,13

DEL: 6/15, 7/15, 8/15

98% cotton/ 2% elastane, 30" inseam, light weight stretch denim pant with all over plaid print, low rise skinny leg fit, and logo embroidery on back right side waistband.



COMPROMISE PANT

M35709309

COLORS: BLW

SIZES: 0,1,3,5,7,9,11,13

DEL: 6/15, 7/15, 8/15

98% cotton/ 2% elastane, 28" inseam, light weight stretch denim cigarette pant with engineered floral ombre print, low rise skinny leg fit, and logo embroidery on back right side waistband.





WICKED STITCH PANT

M35709311

COLORS: BLK,BLB,RED
SIZES: 0,1,3,5,7,9,11,13
DEL: 6/15, 7/15, 8/15

81% cotton/ 17% polyester/ 2% elastane, 28" inseam, light weight stretch denim pant with enzyme stone wash, low rise skinny leg fit pant, embroidered artwork on front and back pockets, and logo embroidery on back right side waistband.



AFTER PARTY PANT

M35709307

COLORS: BLK
SIZES: XS,S,M,L,XL
DEL: 6/15, 7/15, 8/15

95% cotton/ 5% elastane jersey, 200 grams, 29" inseam, low rise skinny leg fit knit pant with engineered heart logo screen print on back, and contrast light weight french terry waistband with all over floral print and logo tack in bottom left corner.



JORDAN PANT

M35709305

COLORS: HGR
SIZES: XS,S,M,L,XL
DEL: 6/15, 7/15, 8/15

60% cotton/ 40% polyester french terry, 185 grams, 29" inseam, heather sweatpant with elastic waistband, front side pockets, back welt pocket with logo clip label at pocket edge, logo engineered leg screen.



ALL THE LOVE PANT

M35709303

COLORS: BLK
SIZES: XS,S,M,L,XL
DEL: 6/15, 7/15, 8/15

60% cotton/ 40% polyester, 260 grams, 22" inseam, boyfriend fit cropped fleece pant with all over floral printed drawstring waistband, contrast pink stitching along pocket openings and side seams, 2 color logo embroidery on bottom left side leg, and custom woven label on back right side below waistband.





WASHED OUT SKIRT

M35715301

COLORS: BLK

SIZES: XS,S,M,L,XL

DEL: 6/15, 7/15, 8/15

65% cotton/ 35% viscose, 39" side seam, crochet fam lace maxi skirt with elastic waistband, scalloped lace hem, scalloped lace trimmed front left side slit and hemline, and logo tack on center back below waistband.



NIGHTMARE SKIRT

M35715302

COLORS: BLK

SIZES: XS,S,M,L,XL

DEL: 6/15, 7/15, 8/15

100% rayon woven, lightweight, 36" center front length, handkerchief maxi skirt, elastic waistband, allover engineered stripe print with metal logo badge at left waistband.



PLAIDNESS SKIRT

M35715303

COLORS: RED

SIZES: 0,1,3,5,7,9,11,13

DEL: 6/15, 7/15, 8/15

100% cotton, 15" side seam, light weight woven plaid flannel mini skirt with invisible zipper side closure, and logo tack on front waistband.





VIVI SKIRT

M25715205

COLORS: BLK

SIZES: XS,S,M,L,XL

DEL: 5/15, 6/15, 7/15, 8/15

100% rayon lightweight woven, 16" side seam length, elastic waistband skater skirt, metal logo badge at left hem



WEST COAST SHORT

M35708300

COLORS: CHH

SIZES: XS,S,M,L,XL

DEL: 6/15, 7/15, 8/15

100% cotton, 180 grams, 2" inseam, light weight heather french terry athletic short with all over floral print, smocked jersey waistband with fixed bow at center front, and logo embroidery on front left side of short above hem.





Dani G



DANI G BEYOND VNECK

M357S18311

COLORS: HPK
 SIZES: XS,S,M,L,XL
 DEL: 5/15, 6/15, 7/15, 8/15

100% cotton jersey, 145 grams, v-neck tee with right shoulder foil screen.



DANI G DREAM WEAVER SCOOP

M357S18312

COLORS: CHA,BLK
 SIZES: XS,S,M,L,XL
 DEL: 5/15, 6/15, 7/15, 8/15

50% polyester/ 50% cotton burnout jersey, 130 grams, novelty scoop with multi colored front chest screen.



DANI G HURRICANE TANK

M357S23308

COLORS: WHT
 SIZES: XS,S,M,L,XL
 DEL: 5/15, 6/15, 7/15, 8/15

100% cotton jersey, 145 grams, muscle tee with multi colored front screen.



DANI G GIRL RAGLAN

M357S19301

COLORS: BLK
 SIZES: XS,S,M,L,XL
 DEL: 5/15, 6/15, 7/15, 8/15

50% polyester/ 50% viscose two tone relaxed raglan tee with front screen.





Printable Fleece



ROCK IT CREW FLEECE

M357S20301

COLORS: CHH,RED
SIZES: XS,S,M,L,XL
DEL: 5/15, 6/15, 7/15, 8/15

60% cotton / 40% polyester crew neck fleece with oversized front screen.





FADER CREW FLEECE

M357S20300

COLORS: BLK,PUR
 SIZES: XS,S,M,L,XL
 DEL: 5/15, 6/15, 7/15, 8/15

68% cotton/ 32% polyester sweater knit french terry, 240 grams, crew neck pullover fleece with 2 color front right shoulder screen.



PASSION PULLOVER

M357S21301

COLORS: BLK
 SIZES: XS,S,M,L,XL
 DEL: 5/15, 6/15, 7/15, 8/15

80% cotton/ 20% polyester, 240 grams, pullover hooded fleece with three color front chest screen.



LOTUS PULLOVER

M357S21301

COLORS: BLK
 SIZES: XS,S,M,L,XL
 DEL: 5/15, 6/15, 7/15, 8/15

80% cotton/ 20% polyester, 240 grams, pullover hooded fleece with single color front chest screen.



DITTO ZIP FLEECE

M357S22301

COLORS: HPK,BLK
 SIZES: XS,S,M,L,XL
 DEL: 5/15, 6/15, 7/15, 8/15

80% cotton/ 20% polyester, 240 grams, zip up hooded fleece with 2 color front left chest screen and multi color back screen.





PASSION ZIP FLEECE

M357S22305

COLORS: BLK,PIN,TEL

SIZES: XS,S,M,L,XL

DEL: 5/15, 6/15, 7/15, 8/15

68% cotton/ 32% polyester sweater knit french terry, 240 grams, zip up hooded fleece with two color front left chest screen.



OVERSPRAY ZIP FLEECE

M357S22304

COLORS: RED

SIZES: XS,S,M,L,XL

DEL: 5/15, 6/15, 7/15, 8/15

65% cotton/ 35% polyester, two-color deluxe zip up hooded fleece with two color front left chest screen and two color back screen.



SPADE BURNOUT ZIP FLEECE

M35710310

COLORS: BLK

SIZES: XS,S,M,L,XL

DEL: 5/15, 6/15, 7/15, 8/15

50% cotton/ 50% polyester double dye burnout, 240 grams, zip up hooded fleece with multi color front left chest screen and multi color oversized back screen.



BREAK FREE BURNOUT ZIP FLEECE

M35710311

COLORS: BLK

SIZES: XS,S,M,L,XL

DEL: 5/15, 6/15, 7/15, 8/15

50% cotton/ 50% polyester double dye burnout, 240 grams, zip up hooded fleece with multi color front left chest screen and multi color oversized back screen.





Printable LS



BITES THE DUST RAGLAN M357S19303

COLORS: CHA
 SIZES: XS,S,M,L,XL
 DEL: 5/15, 6/15, 7/15, 8/15

50% cotton/ 50% polyester two tone burnout relaxed raglan tee with multi color front chest screen.



PASSION RAGLAN M357S19300

COLORS: HPK
 SIZES: XS,S,M,L,XL
 DEL: 5/15, 6/15, 7/15, 8/15

50% polyester/ 50% viscose two tone relaxed raglan tee with two color front chest screen.



QUEEN OF DIAMONDS RAGLAN M357S19302

COLORS: BLK
 SIZES: XS,S,M,L,XL
 DEL: 5/15, 6/15, 7/15, 8/15

50% polyester/ 50% viscose two tone relaxed raglan tee with two color front chest screen.





X-RAY L/S

M357S19305

COLORS: BLK

SIZES: S,M,L,XL

DEL: 5/15, 6/15, 7/15, 8/15

65% polyester / 35% viscose long sleeve scoop tee with two color front chest screen.



CROSS MY HEART L/S

M357S19304

COLORS: BLK

SIZES: S,M,L,XL

DEL: 5/15, 6/15, 7/15, 8/15

100% cotton jersey, 145 grams, long sleeve v-neck tee with single color front chest screen.



ALTERNATIVE BURNOUT LS

M35703301

COLORS: BLK,TEL,WHT

SIZES: XS,S,M,L,XL

DEL: 5/15, 6/15, 7/15, 8/15

60% cotton / 40% polyester double dye burnout vneck long sleeve top with 3 color front left side screen.





Printable Tees



RHAPSODY TEE

M357S18310

COLORS: CHA,BLK
 SIZES: XS,S,M,L,XL
 DEL: 5/15, 6/15, 7/15, 8/15

50% polyester/ 50% viscose jersey, 130 grams, relaxed tee with multi colored front body screen.



ENAMORED TEE

M357S18316

COLORS: CHA,BLK
 SIZES: XS,S,M,L,XL
 DEL: 5/15, 6/15, 7/15, 8/15

50% polyester/ 50% viscose jersey, 130 grams, relaxed tee, 2 color screen with foil at front body.



RUN AROUND TEE

M357S18309

COLORS: BLK,CHA
 SIZES: XS,S,M,L,XL
 DEL: 5/15, 6/15, 7/15, 8/15

50% polyester / 50% viscose novelty vneck tee with allover front screen.



QUEEN OF DIAMONDS SCOOP

M357S18304

COLORS: CHA,BLK
 SIZES: XS,S,M,L,XL
 DEL: 5/15, 6/15, 7/15, 8/15

50% polyester/ 50% cotton burn-out jersey, 130 grams, novelty scoop with front chest screen.





LONELY ROSE SCOOP

M357S18305

COLORS: BLK

SIZES: XS,S,M,L,XL

DEL: 5/15, 6/15, 7/15, 8/15

50% polyester/ 50% cotton burn-out jersey, 130 grams, novelty scoop with multi colored front screen.



SPADE SCOOP

M357S18314

COLORS: CHA,BLK

SIZES: XS,S,M,L,XL

DEL: 5/15, 6/15, 7/15, 8/15

50% polyester/ 50% cotton burn-out jersey, 130 grams, novelty scoop with multi colored front body screen.



SPARROW TEE

M357S18306

COLORS: BLK,WHT

SIZES: XS,S,M,L,XL

DEL: 5/15, 6/15, 7/15, 8/15

50% polyester/ 50% viscose jersey, 130 grams, novelty hi-lo vneck tee with multi colored left side screen.





RUNAWAY VNECK

M357S18308

COLORS: WHT,BLK
 SIZES: XS,S,M,L,XL
 DEL: 5/15, 6/15, 7/15, 8/15

100% cotton jersey, 145 grams, v-neck tee with two color front right side screen.



TWISTED VNECK

M357S18301

COLORS: BLK
 SIZES: XS,S,M,L,XL
 DEL: 5/15, 6/15, 7/15, 8/15

100% cotton jersey, 145 grams, v-neck tee with two toned neckline screen.



WEBBED VNECK

M357S18313

COLORS: BLK
 SIZES: XS,S,M,L,XL
 DEL: 5/15, 6/15, 7/15, 8/15

100% cotton jersey, 145 grams, v-neck tee with multi colored front body screen.



LOTUS VNECK

M357S18303

COLORS: BLK,WHT
 SIZES: XS,S,M,L,XL
 DEL: 5/15, 6/15, 7/15, 8/15

100% cotton jersey, 145 grams, v-neck tee with single color front chest screen.





PASSION VNECK

M357S18300

COLORS: WHT,BLK,HPK

SIZES: XS,S,M,L,XL

DEL: 5/15, 6/15, 7/15, 8/15

100% cotton jersey, 145 grams, v-neck tee with two toned front chest screen.



AMBIVALENT SCOOP

M357S18315

COLORS: WHT,BLK

SIZES: XS,S,M,L,XL

DEL: 5/15, 6/15, 7/15, 8/15

100% cotton jersey, 145 grams, scoop neck tee with multi colored front chest screen.



CROSS MY HEART VNECK

M357S18302

COLORS: HPK

SIZES: XS,S,M,L,XL

DEL: 5/15, 6/15, 7/15, 8/15

100% cotton jersey, 145 grams, v-neck tee with single color front body screen, foil detail on letters.



DITTO VNECK

M357S18307

COLORS: BLK,WHT

SIZES: XS,S,M,L,XL

DEL: 5/15, 6/15, 7/15, 8/15

100% cotton jersey, 145 grams, v-neck tee with multi colored front left chest screen and multi colored back screen.





Printable Tanks



FOREVER YOUNG TANK

M357S23310

COLORS: BLK,WHT

SIZES: XS,S,M,L,XL

DEL: 5/15, 6/15, 7/15, 8/15

100% cotton jersey, 145 grams, relaxed muscle tank with single color front body screen.





X-RAY TANK

M357S23303

COLORS: BLK
 SIZES: XS,S,M,L,XL
 DEL: 5/15, 6/15, 7/15, 8/15

100% cotton jersey, 145 grams, relaxed muscle tank with two color front chest screen.



HELL FLAG TANK

M357S23307

COLORS: WHT,BLK
 SIZES: XS,S,M,L,XL
 DEL: 5/15, 6/15, 7/15, 8/15

100% cotton jersey, 145 grams, relaxed muscle tank with two color front body screen.



ROCK IT TANK

M357S23301

COLORS: BLK,WHT
 SIZES: XS,S,M,L,XL
 DEL: 5/15, 6/15, 7/15, 8/15

50% polyester/ 50% viscose jersey, 130 grams, relaxed racerback tank with single color faux reverse print.



LIVE FOREVER TANK

M357S23304

COLORS: WHT,BLK
 SIZES: XS,S,M,L,XL
 DEL: 5/15, 6/15, 7/15, 8/15

50% polyester/ 50% viscose jersey, 130 grams, relaxed racerback tank with multi colored front body screen.





TANGLED UP TANK

M357S23309

COLORS: WHT
 SIZES: XS,S,M,L,XL
 DEL: 5/15, 6/15, 7/15, 8/15

50% cotton / 50% polyester double dye burnout jersey, 130 grams, muscle tank with oversized front three color screen.



INNUENDO TANK

M357S23305

COLORS: BLK
 SIZES: XS,S,M,L,XL
 DEL: 5/15, 6/15, 7/15, 8/15

50% cotton / 50% polyester double dye burnout jersey, 130 grams, muscle tank with multi colored front and back top body screens.



UNDERCOVER TANK

M357S23306

COLORS: WHT
 SIZES: XS,S,M,L,XL
 DEL: 5/15, 6/15, 7/15, 8/15

50% cotton / 50% polyester double dye burnout jersey, 130 grams, muscle tank with multi colored front body screen.



BREAK FREE TANK

M357S23302

COLORS: BLK
 SIZES: XS,S,M,L,XL
 DEL: 5/15, 6/15, 7/15, 8/15

100% cotton jersey, 145 grams, muscle tee with multi colored front chest screen.





Lil Maidens

Lil Maidens Size Chart

	S		M		L		XL	
	7	8	8	10	10	12	12	14
Height	47-49		49-52		52-56		57-60	
Bust	24-25		25-26		26-27		28-29	
Waist	21.5-22.5		22.5-23.5		23.5-24.5		25.5-26.5	
Hip	27.5-28.5		28.5-29.5		29.5-30.5		31.5-32.5	
Age	6-7		7-8		8-10		10-13	





SYDNEY TOP

M35803301

COLORS: BLK

SIZES: S,M,L,XL

DEL: 6/15, 7/15, 8/15

100% cotton jersey, 165 grams, 20" hps long sleeve handkerchief top with 100% nylon stretch lace sleeves and scalloped lace trim, front chest logo screen.



HELENA TOP

M35803300

COLORS: WHT

SIZES: S,M,L,XL

DEL: 6/15, 7/15, 8/15

100% cotton jersey, 165 grams, 23" hps, short sleeve high/low top with woven trim at front and back sleeves, 100% cotton woven crochet lace sleeves, allover print and chest pocket logo embroidery.



IRELAND TOP

M35803302

COLORS: WHT

SIZES: S,M,L,XL

DEL: 6/15, 7/15, 8/15

100% cotton jersey, 165 grams, 20" hps, long sleeve high/low top with engineered allover print, engineered front panel and logo embroidery at back left shoulder.





HELENA TANK

M35811301

COLORS: BLK

SIZES: S,M,L,XL

DEL: 6/15, 7/15, 8/15

100% cotton jersey, 165 grams, 21" hps, racerback bow tank with saddle hem, contrast allover printed binding and back panel with front chest logo spot screen.



SYDNEY TANK

M35811300

COLORS: BLK

SIZES: S,M,L,XL

DEL: 6/15, 7/15, 8/15

100% rayon crinkle gauze, lightweight, 21" hps, racerback tank with neckline tie, pintuck detail at front bodice, 100% cotton crochet lace back piecing with metal plate trim at front left hem.



SYDNEY FLANNEL

M35804300

COLORS: PIN

SIZES: S,M,L,XL

DEL: 6/15, 7/15, 8/15

100% cotton, lightweight twill weave plaid, 22" hps, yarn dye button up flannel with contrast 80% cotton/20% polyester fleece sleeves and hood, back right yoke logo embroidery and logo clip label at bottom left hem.



IRELAND FLEECE

M35810300

COLORS: IND

SIZES: S,M,L,XL

DEL: 6/15, 7/15, 8/15

82% cotton/14% polyester/4% spandex twill knit french terry, 280 grams, 22" hps, jacket style fleece with contrast french terry inset sleeves and hood, zippered chest pockets with stitch detail, welt pockets on front bottom body, button closure at front, logo screen at back body.





HELENA MAXI DRESS

M35816300

COLORS: BLK
 SIZES: S,M,L,XL
 DEL: 6/15, 7/15, 8/15

95% cotton/ 5% elastane jersey, 180 grams, 39" hps, high/low tank maxi dress with drawstring waist, allover printed skirt and logo embroidery at left chest pocket.



SYDNEY DRESS

M35816301

COLORS: BLK
 SIZES: S,M,L,XL
 DEL: 6/15, 7/15, 8/15

100% rayon crinkle gauze, lightweight, 30" hps, bell sleeved mini dress with bodice pintucks, neckline tie closure, shirred bottom skirt panel, 100% nylon scalloped lace at sleeve and skirt bottom edge, logo trim plate at front skirt hem.



SHOW STOPPER ONESIE

M35M39301

COLORS: BLK
 SIZES: 6MO,12MO,18MO
 DEL: 6/15, 7/15, 8/15

100% cotton jersey, 165 grams, tank baby onesie with separate onesie elastic waist and leg shorts, contrast wb with fixed bow, button up back neckline, 100% cotton crochet lace skirt with allover logo printed bodice.



HELENA ONESIE

M35M39300

COLORS: WHT
 SIZES: 6MO,12MO,18MO
 DEL: 6/15, 7/15, 8/15

100% cotton jersey, 165 grams, long sleeve onesie with two color tiered tulle skirt, snap closure at back neckline and bottom crotch, allover print and front chest logo spot screen.





BOW EM CREW FLEECE

M358S20301

COLORS: BLK,HPK

SIZES: S,M,L,XL

DEL: 5/15, 6/15, 7/15, 8/15

60% cotton/ 40% polyester, 200 grams, crew neck pullover fleece with multi colored front body screen.



DELILAH CREW FLEECE

M358S20300

COLORS: CHH,BLK

SIZES: S,M,L,XL

DEL: 5/15, 6/15, 7/15, 8/15

60% cotton/ 40% polyester, 200 grams, crew neck pullover fleece, two color front body screen with foil.



SWEET BEAUTY ZIP FLEECE

M358S22300

COLORS: BLK,HPK

SIZES: S,M,L,XL

DEL: 5/15, 6/15, 7/15, 8/15

80% cotton/ 20% polyester, 220 grams, zip up hooded fleece with two color front left chest screen and multi colored back screen.





BOW EM TEE

M358S18302

COLORS: WHT,HPK
 SIZES: S,M,L,XL
 DEL: 5/15, 6/15, 7/15, 8/15

100% cotton jersey, 145 grams, crew neck tee with multi colored front body screen.



ALL YOU NEED TEE

M358S18300

COLORS: WHT,PUR
 SIZES: S,M,L,XL
 DEL: 5/15, 6/15, 7/15, 8/15

100% cotton jersey, 145 grams, crew neck tee with three color front body screen.



DELILAH TEE

M358S18301

COLORS: BLK,HPK
 SIZES: S,M,L,XL
 DEL: 5/15, 6/15, 7/15, 8/15

100% cotton jersey, 145 grams, crew neck tee with two toned front body screen.



SWEET BEAUTY TEE

M358S18303

COLORS: BLK,PUR
 SIZES: S,M,L,XL
 DEL: 5/15, 6/15, 7/15, 8/15

100% cotton jersey, 145 grams, crew neck tee with three color front left chest screen and multi colored back screen.





PUPPY LOVE TEE - TODDLERS M35MS18301

COLORS: HPK,BLK
 SIZES: 2T,3T,4T
 DEL: 5/15, 6/15, 7/15, 8/15

100% cotton jersey, 145 grams, crew neck tee with multi colored front body screen.

INFANTS: M33MS18304

SIZES: 6MO, 12MO, 18MO, 24MO



BOW EM TEE - TODDLERS M35MS18302

COLORS: BLK,HPK
 SIZES: 2T,3T,4T
 DEL: 5/15, 6/15, 7/15, 8/15

100% cotton jersey, 145 grams, crew neck tee with multi colored front body screen.

INFANTS: M33MS18305

SIZES: 6MO, 12MO, 18MO, 24MO



SUPER CUTE TEE - TODDLERS M35MS18300

COLORS: BLK,HPK
 SIZES: 2T,3T,4T
 DEL: 5/15, 6/15, 7/15, 8/15

100% cotton jersey, 145 grams, crew neck tee with multi colored front body screen.

INFANTS: M33MS18303

SIZES: 6MO, 12MO, 18MO, 24MO



SWEET BEAUTY TEE - TODDLERS M35MS18306

COLORS: BLK,HPK
 SIZES: 2T,3T,4T
 DEL: 5/15, 6/15, 7/15, 8/15

100% cotton jersey, 145 grams, crew neck tee with three color front left chest screen and multi colored back screen.

INFANTS: M33MS18307

SIZES: 6MO, 12MO, 18MO, 24MO





BOWS BE4 BROS ONESIE M35MS39302

COLORS: BLK,PIN

SIZES: 6MO,12MO,18MO

DEL: 5/15, 6/15, 7/15, 8/15

100% cotton jersey, 145 grams, bottom snap baby onesie with three color front body screen.



SWEET BEAUTY ONESIE M35MS39300

COLORS: PIN,BLK

SIZES: 6MO,12MO,18MO

DEL: 5/15, 6/15, 7/15, 8/15

100% cotton jersey, 145 grams, bottom snap baby onesie with three color front left chest screen and multi colored back body screen.





Accessories



LOST AND FREE PURSE

M35795300

COLORS: BLK

SIZES: ONE

DEL: 6/15, 7/15, 8/15

faux leather zippered bag with black and brown contrast panels, fringe detail and mixed finish stud trim along front seams, and matte black logo badge on front. 13" h X 14.5" w x 4" d strap length: 43"



VELVET TOUCH CROSSBODY

M35795301

COLORS: BLK

SIZES: ONE

DEL: 6/15, 7/15, 8/15

faux leather crossbody bag with contrast faux alligator top foldover panel, ornate metal trim on center front strap, and black enamel logo tack on front. 6" h x 9.5" w x 1" d strap length: 52"



GYPSY ROAD HOBO

M35795303

COLORS: BLK

SIZES: ONE

DEL: 6/15, 7/15, 8/15

canvas slouchy purse with allover print and contrast faux leather panel and strap, mixed stud trim detail along top opening and shoulder strap, zipper pocket on front, logo embroidery on back, and zipper top closure. 12" h x 16" w x 4" d strap length: 34"



HEART STOPS CROSSBODY M35795302

COLORS: BLK
 SIZES: ONE
 DEL: 6/15, 7/15, 8/15

crossbody purse with canvas bottom panel and contrast debossed faux leather top panel, zipper closure with fringe puller, small circle stud trim, and shiny silver logo plaque on front. 10" w x 6" h x 1" d strap length: 52"



PAINT ME BLACK PURSE M35795304

COLORS: BLK,RED
 SIZES: ONE
 DEL: 6/15, 7/15, 8/15

faux leather shoulder bag with debossed panels, zipper pocket on front and sides, silver spike trim detail, and logo plate on front pocket. 10" h x 13.5" w x 6.5" d strap drop: 10"



KARMA PURSE M35795305

COLORS: BLK
 SIZES: ONE
 DEL: 6/15, 7/15, 8/15

faux leather shoulder bag with engineered bandana style print on front panel, zipper pocket on front, straps on sides, and logo embroidery on back. 11.5" h x 11.5" w x 4.75" d strap drop: 10.5"



STEALTHY PURSE

M44795405

COLORS: BLK
 SIZES: ONE
 DEL: 6/15, 7/15, 8/15

REALTREE XTRA printed purse with black faux leather straps and trim, black satin side bows, logo applique on front, small embroidery on back, and black polyester lining inside. 12" h x 14" w x 4" d strap drop: 9.5"



LOST AND FREE WALLET

M35797300

COLORS: BLK
 SIZES: ONE
 DEL: 6/15, 7/15, 8/15

faux leather zippered wallet with contrast panels, fringe zipper pull, mixed finish stud trim along front seams, and matte black logo badge on front. 7.5" w x 4" h x 1" d



PAINT ME BLACK WALLET

M35797301

COLORS: BLK
 SIZES: ONE
 DEL: 6/15, 7/15, 8/15

faux leather wallet with debossed top panel, spike trim and logo plate on front, zipper pocket on back, and snap top closure. 8" w x 4.25" h x 1" d



STEALTHY WALLET

M35797302

COLORS: BLK
 SIZES: ONE
 DEL: 6/15, 7/15, 8/15

zippered wallet with REALTREE XTRA print and contrast faux leather panels, faux leather applique and stud trim on front, logo embroidery on back. 7.5" w x 4" h x 1" d





AFFINITY TOTE

M35771300

COLORS: CRM, BRN

SIZES: ONE

DEL: 6/15, 7/15, 8/15

canvas tote with faux leather straps, mixed metal stud details, engineered print on front, and logo tack on bottom corner. 13.5" h x 14" w x 4" d strap drop: 10.5"



INSTIGATOR TOTE

M35771301

COLORS: BLK

SIZES: ONE

DEL: 6/15, 7/15, 8/15

canvas tote with allover print, flat circle stud trim on front, zipper front pocket with logo embroidery and strap with buckle, logo plate on back, and magnetic snap closure. 14" h x 14.5" w x 4" d strap drop: 10"



ELITE TOTE

M35771302

COLORS: BLK

SIZES: ONE

DEL: 6/15, 7/15, 8/15

canvas tote with allover print and contrast faux leather trim, zipper and flap pockets on front with pouch pockets on sides, logo embroidery and buckle detail on front, magnetic snap closure, hot pink interior lining. 13" h x 15.5" w x 5.5" d strap drop: 11"



MYSTIC BACKPACK

M35772303

COLORS: WNE

SIZES: ONE

DEL: 6/15, 7/15, 8/15

600D poly drawstring backpack with digital print, faux leather panels and trimming, embroidered applique on front left pocket, and logo embroidery above front right pocket. 16" h x 12.5" w x 5" d





EXILE BACKPACK

M35772301

COLORS: BLK
 SIZES: ONE
 DEL: 6/15, 7/15, 8/15

cotton canvas drawstring backpack with faux leather trimming and fringe detail, mixed studs on top panel, zipper pocket on front, engineered print, and matte black logo badge.
 14" h x 12.5" w x 5" d



PRETTY FACES BACKPACK

M35772300

COLORS: BLK
 SIZES: ONE
 DEL: 6/15, 7/15, 8/15

600D poly backpack with mixed printed panels, small logo tack on front, stud trim along front organizer pocket, and tonal logo embroidery on front.
 16.5" h x 12.5" w x 5.25" d



BED OF ROSES BACKPACK

M35772302

COLORS: BLK
 SIZES: ONE
 DEL: 6/15, 7/15, 8/15

600D poly backpack with all-over print on main compartment panels and top of shoulder straps, with quilted detail and logo embroidery on front organizer pocket, and vertical zipper pocket on front panel at top.
 16.5" h x 12.5" w x 5.5" d



HEY LADY BACKPACK

M35772304

COLORS: BLK
 SIZES: ONE
 DEL: 6/15, 7/15, 8/15

600D poly backpack with embroidered applique on front, logo embroidery on shoulder strap, quilted front pocket, contrast bottom side panels, contrast webbing and zippers, and mesh side pockets.
 17.5" h x 12.5" w x 6.5" d





MYSTIC SNAPBACK

M35796301

COLORS: BLK
 SIZES: ONE
 DEL: 6/15, 7/15, 8/15

100% cotton snapback hat with engineered print and embroidered applique on front, metal trim plate on side, black satin undervisor, and black snapback.



DETERMINED HAT

M35796300

COLORS: BLK
 SIZES: ONE
 DEL: 6/15, 7/15, 8/15

80% acrylic, 20% wool snapback flat-billed hat with 3D embroidery on front and engineered on to visor, screen on undervisor, contrast stitching on top visor, and black snapback.



WEST COAST SNAPBACK

M35796303

COLORS: BLK
 SIZES: ONE
 DEL: 6/15, 7/15, 8/15

60% cotton, 40% polyester curved-bill snapback hat with twill front panel, black mesh back panels, printed visor, embroidered applique on front, clip label at back, black satin undervisor, and black snapback.



SHIFTY TRUCKER

M35796302

COLORS: BLK
 SIZES: ONE
 DEL: 6/15, 7/15, 8/15

60% cotton, 40% polyester curved-bill snapback hat with REALTREE XTRA printed front panel, black mesh back panels, embroidered applique on front, clip label at side, black satin undervisor, and black snapback.





CANDY BEANIE

M35791304

COLORS: HPK

SIZES: ONE

DEL: 6/15, 7/15, 8/15

100% acrylic heathered fitted beanie with two color embroidery on front.



LUCKY ONE BEANIE

M35791303

COLORS: BLK

SIZES: ONE

DEL: 6/15, 7/15, 8/15

100% acrylic chunky cable knit fitted beanie with a two color embroidery on front.



RAINMAKER BEANIE

M35791302

COLORS: BLW

SIZES: ONE

DEL: 6/15, 7/15, 8/15

100% acrylic knit beanie with pom pom on top, jacquard artwork throughout, and clip label at side.



WARNING BEANIE

M35791301

COLORS: HGR

SIZES: ONE

DEL: 6/15, 7/15, 8/15

100% acrylic knit beanie with pom pom on top, jacquard artwork on front, and clip label at side.



LITTLE DREAMER SET

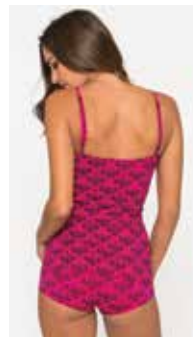
M35783300

COLORS: PIN

SIZES: XS,S,M,L,XL

DEL: 6/15, 7/15, 8/15

95% cotton/ 5% elastane cami and panty set with allover print, tiny bow trim details, and logo embroideries on bottom of cami and back of panty.



STEALTHY SLEEPER SET

M35783302

COLORS: BLK

SIZES: XS,S,M,L,XL

DEL: 6/15, 7/15, 8/15

95% cotton/ 5% elastane cami and panty set with REALTREE XTRA print, tiny bow detail on top and bottom, logo embroidery on cami, and logo screen print on back of panty.





MEMORIES SOCK

M35787303

COLORS: WNE,BLK

SIZES: ONE

DEL: 6/15, 7/15, 8/15

80% acrylic, 15% polyester, 5% spandex, 18" tall, over-the-knee pointelle knit sock with scalloped finish and small logo tack on outsides.



ELECTRIC SOCK

M35787302

COLORS: BLW

SIZES: ONE

DEL: 6/15, 7/15, 8/15

80% acrylic, 15% polyester, 5" elastane, 10" tall sock with contrast toe and heel, jacquard pattern throughout, and skull art on outsides.



STAR STRUCK SOCK

M35787301

COLORS: BPI

SIZES: ONE

DEL: 6/15, 7/15, 8/15

80% acrylic, 15% polyester, 5% elastane, 18" tall sock with contrast toe & heel, and logos on outsides of feet.



HAZARD SOCK

M15787100

COLORS: WHT

SIZES: ONE

DEL: 5/15, 6/15, 7/15, 8/15

80% acrylic 15% poly 5% elastane, white 18" tall sock with contrast black toe & heel, with stripes and heart logo embroidery on top, and logos on outsides of feet.





MYSTERIOUS PUMP

M35784307

COLORS:	BLK
SIZES:	6,7,8,9,10
DEL:	6/15, 7/15, 8/15

faux leather open-toe pumps with engineered art on front and heel, logo print on wearer's left inside heel, and black outsoles. heel height: 5"



SERENITY PUMP

M35784305

COLORS:	BLW
SIZES:	6,7,8,9,10
DEL:	6/15, 7/15, 8/15

faux leather pumps with all-over hand-drawn style artwork, and black outsoles. heel height: 5"



HEARTBEAT PUMP

M35784300

COLORS:	BLK
SIZES:	6,7,8,9,10
DEL:	6/15, 7/15, 8/15

matte black faux leather pump with black satin lace up detail on contrast colored heel, satin bow trim, hot pink logo print, hanging logo heart charm on center back, and hot pink outsoles. heel height: 5"



POISON ANKLE BOOT

M35784301

COLORS:	BLK
SIZES:	6,7,8,9,10
DEL:	6/15, 7/15, 8/15

black faux leather ankle boot with contrast faux snake upper, zipper detail at sides, small spike trim on outside of heels, and tonal logo print on inside heel. heel height: 4.5"



ICON BOOT

M35784304

COLORS: BLK

SIZES: 6,7,8,9,10

DEL: 6/15, 7/15, 8/15

faux suede tall boot with engineered print, embroidered applique, rhinestone detail on front, quilted back, shiny black stud trim, gray outsoles, and black faux fur lining inside. boot shaft height: 12.5"



SWEET SOUL SANDAL

M25784200

COLORS: CHA,PIN

SIZES: 6,7,8,9,10

DEL: 5/15, 6/15, 7/15, 8/15

eva flat sandal with bead-trimmed straps and allover print footbed.



NIGHT WATCH SANDAL

M25784201

COLORS: BLK

SIZES: 6,7,8,9,10

DEL: 5/15, 6/15, 7/15, 8/15

faux leather flat sandal with stud trim detail on straps, spike trim along center front, black foil logo screens on footbeds, and double ankle straps with buckle closures.



ANTIDOTE IPHONE 6 CASE

M35783301

COLORS: BLK

SIZES: ONE

DEL: 6/15, 7/15, 8/15

iPhone 6 case with hand drawn style artwork on a black rubberized textured base, and hot pink logo printed on inside.





FOREVER STICKER 25PPK

M43789401

COLORS: BLK
 SIZES: ONE
 DEL: 5/15, 6/15, 7/15, 8/15

clear vinyl sticker with red, black, & white ink.
 4" tall.



ANTIQUE LOGO STICKER 25PPK

M14789101

COLORS: BLK
 SIZES: ONE
 DEL: 5/15, 6/15, 7/15, 8/15

vinyl sticker with pink, black, and white ink.
 6.5" tall.



GOOD LOOKIN STICKER 25PPK

M43789400

COLORS: BLK
 SIZES: ONE
 DEL: 5/15, 6/15, 7/15, 8/15

clear vinyl sticker with pink and black ink.
 6" tall



HEARTSTRUCK STICKER 15PPK

M14789100

COLORS: WHT
 SIZES: ONE
 DEL: 5/15, 6/15, 7/15, 8/15

white die-cut decal.
 6" tall.



CURSIVE STICKER 25PPK

M13789100

COLORS: BLK
 SIZES: ONE
 DEL: 5/15, 6/15, 7/15, 8/15

vinyl sticker with pink and black ink.
 8" wide.







